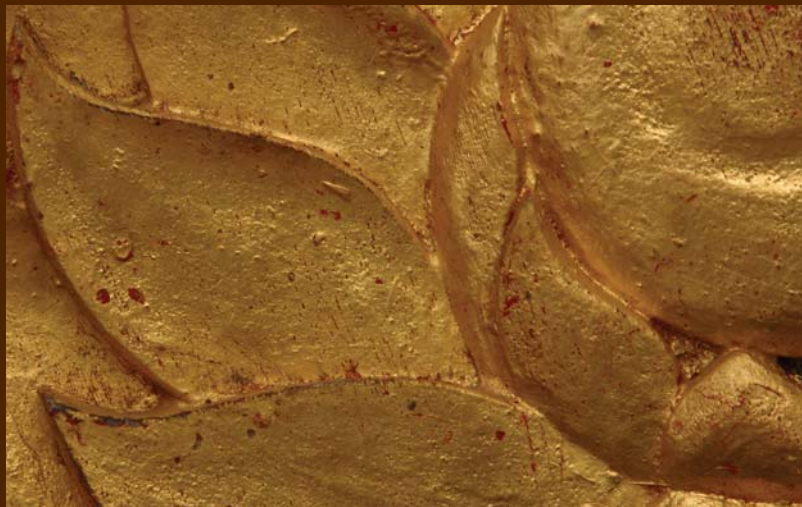


COUNTRY LIVING

ARTISANS COLLECTION

ALL THAT GLITTERS IS...GOLD & SILVER LEAF



Decorative Finishes
by
Caromal Colours®

*The beauty of metal leaf on walls,
furniture or accessories*



Gilding is the traditional technique of applying thin sheets of gold, silver or copper to a painted surface. For centuries, artisans have cultivated a mystique surrounding the application of metal leaf and the beautiful finishes that are the result. The materials in this kit will allow you to capture the magical glow that only comes by using real metal.

The process is surprisingly easy and really quite fun! By following these simple instructions, you can gild everything from large wall surfaces to picture frames and small objects, like wooden stars for your holiday celebration.

What makes using this kit so simple? The first is our Basecoat that sticks to almost anything including previously painted surfaces, wood, metal, plastic, bricks, concrete . . . maybe even a pumpkin! Second, we are using the leaf in a way that is easy to handle and creates spectacular finishes. The world is going to be a more glittery place!!

Tips

- Two thin Basecoats are better than one thick coat.
- A second coat would be necessary if the original color still shows through and you are not going to cover the surface completely with the leaf.
- Drying time of the Basecoat is approximately 1-4 hours depending upon how thick it was applied. You can dry the Basecoat with a hairdryer on a low setting if you like. Working on a completely dry surface is best.
- Don't worry about getting a completely flat application of Basecoat. Sometimes we apply our Basecoat in a thicker, texture like manner just to create interest in the finish!
- If you want a completely smooth application of leaf on your surface, you can add up to 20% water to our Basecoat making it thinner to apply. You can sand everything between each coat using 220 – 400 grit sandpaper to make the surface very smooth. (Why you would want to do all this extra work is beyond us!)



Surface Prep

Be sure your surface is clean and dry. You can lightly sand a slick surface such as plastic, tile or laminate prior to cleaning. Using a good painter's tape, mask off any areas of the surface that you don't want to gild. Burnish the edge of your tape by pressing down using a hard flat object like the edge of a credit card. This prevents the Basecoat from * "bleeding" and gives a crisp edge.

*bleeding –paint seepage through your taped edge that doesn't look perfectly beautiful.

Step one. Basecoat.

Using the "chip" bristle brush, paint the Caromal Colours® Chocolate Basecoat onto your surface. Allow this to completely dry. Wash the brush you have used with soap and water. Repeat this step if necessary.



Tips

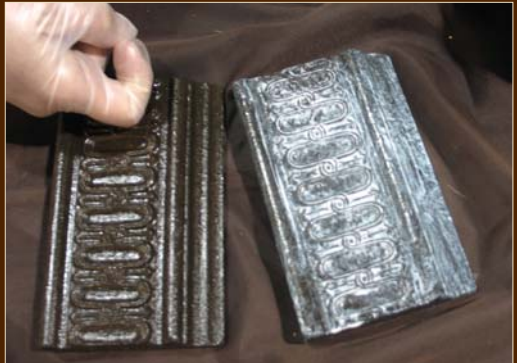
- The size will come to tack* in about 15-30 minutes.
- The size turns clear as it comes to tack
- You will be able to check for tack by putting your knuckle on the size and listening for a little grabbing sound (Professionals call this a whistling tack and now so can you! At a dinner party you can say something like “Boy, that whistling tack is something isn’t it?”)

Step two. Sticky Size.



Using the dry bristle brush from step one, apply Sticky Size to the surface. Allow this to come to tack*.

*tack - the little popping noise made by your knuckle when the size is ready.



Tips

- Be gentle when you handle the leaf as you will get more coverage.
- If you prefer to see some of your basecoat color through the leaf, simply apply less.
- If you want complete coverage with the leaf, take small amounts in your hand and gently rub them into open areas. This will squash the leaf into the small open areas.
- Using leaf is tricky because if you rub it too hard it will scratch; however, you don't have to be afraid of it as you push it and mush it onto the surface.
- Wear gloves when you handle the leaf as it is easier to handle and won't leave fingerprints in your application.

*Using a soft cloth, "burnish" or gently rub the excess leaf off the surface.

Step three. The Leaf.

Apply the leaf wearing the gloves provided. Do this by picking up small handfuls, laying it on the surface and pressing it into place! Voilá, easy!



Tips

- Using the chip brush provided brush the Toner into the crevices. Allowing the Toner to remain dark in these crevices will add depth and interest to your object.
- Wiping off Toner with a damp tool will remove more than if the tool is dry.
- Have so much fun with this Toner...leave it heavy, wipe it back, make it drippy...this is another creative part!

*if you would like to change the Basecoat color prior to gilding...visit our website for optional Basecoat colors or use a favorite paint of your own. Remember...your Basecoat will not stick to every surface like ours will.

** If you notice your leaf tarnishing overtime, you can seal it with any non-water-based sealer. Some people, like us, love the tarnishing process and don't ever seal it but rather enjoy the patina finish of the leaf! You may also want to apply a protective coat if you have gilded a wall in a splashy area or an object that will get lots of use! Visit our website to explore Liberon Wax....our favorite topcoat, sealer for leaf.

Step four. Toner (optional)

Apply Caromal Colours® Toner to enhance the color and interest of the leaf. Brush on the Toner. Wipe off using a soft cloth as desired. Allow this to dry.





COUNTRY LIVING

ARTISANS COLLECTION

Decorative Finishes

by

Caromal Colours®

For other gilding ideas, technical
assistance or questions, contact us at:

Caromal Colours®

507 N. York Street • Mechanicsburg, PA 17055

www.caromalcolours.com

info@caromalcolours.com